

Solder tags

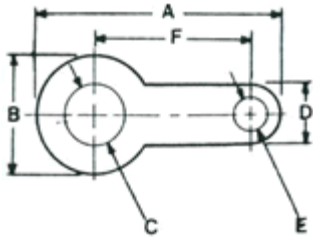
Order Code	Manufacturers Part No	Description
520-170	G410	M2.5 solder tag
520-171	G410	M3 solder tag
530-172	G363	M4 solder tag

RoHS compliant

The enclosed information is believed to be correct. Information may change without notice due to product improvement. Check to ensure that the product is suitable for the intended application. E. and O.E

Telephone **01737 841568**
FAX **01737 841608**
Email technical@electronelec.co.uk
Web www.electronelec.co.uk

Solder Tags



Part No		A		B		C		D		E		F		G		Material
			Tol±		Tol±		Tol±		Tol±		Tol±		Tol±		Tol±	
G410	mm	12.70	.38	6.35	.38	3.35(M3)	-.07	3.18	.38	1.57	.03	7.92	.05	---	---	BRASS
G410	mm	12.70	.38	6.35	.38	2.73(M2.5)	-0.03	3.18	.38	1.57	.03	7.92	.05	---	---	BRASS
G363	mm	14.30	.38	7.95	.38	4.38(M4)	-.08	4.78	.38	1.57	.05	7.92	.05	---	---	BRASS